



Hydro One Networks Inc.

483 Bay Street
8th Floor South Tower
Toronto, Ontario M5G 2P5

HydroOne.com

Dear Resident:

Re: Regular Forestry Maintenance

I am writing to inform you that Hydro One is scheduled to complete vegetation maintenance on the right-of-way in your community in 2024.

Hydro One performs routine maintenance to ensure the safety and reliability of our power lines. This work is essential to prevent unnecessary service interruptions, allow easy and safe access for our crews to perform emergency repairs on the power lines and to keep the right-of-way safe for public use.

The work on the right-of-way in your community will include the removal of incompatible vegetation, including brush (vegetation less than four inches in diameter) and dead, diseased or hazardous trees. Vegetation that requires removal will be marked with orange paint/tape. If trees are removed from your property, all wood, that cannot be chipped, will be left on-site. In areas where there is a higher density of brush, mechanical equipment may be used.

If you have any questions regarding the planned work, please contact our Forestry Department at 1-888-797-4023 or by emailing Forestry.FBC@HydroOne.com. If you are a tenant, we ask that you forward this letter to the property owner.

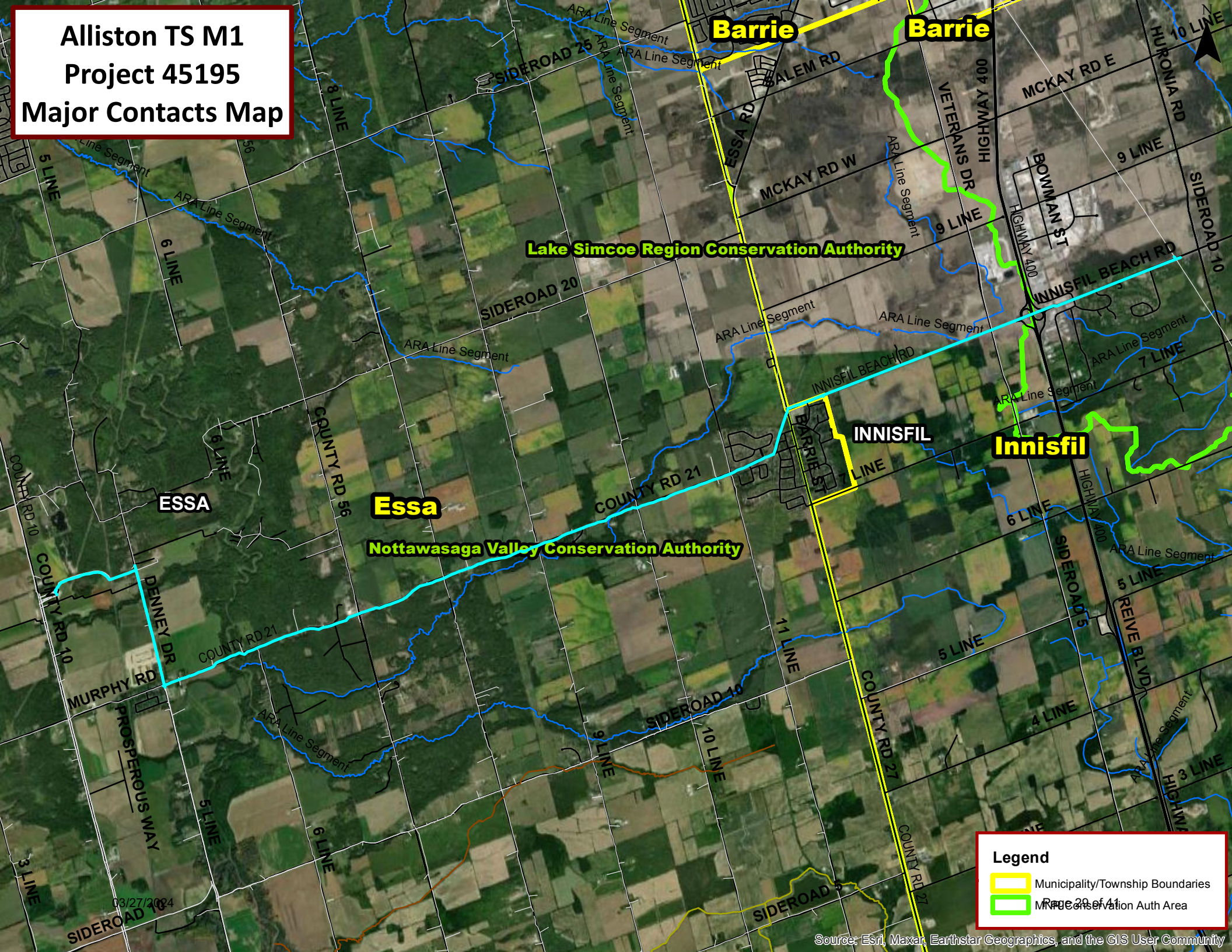
Thank you for your co-operation as we complete this important work.

Sincerely,



Forestry Technician

R04

**Alliston TS M1
Project 45195
Major Contacts Map**



Legend

-  Municipality/Township Boundaries
-  MRA or Conservation Auth Area

03/27/2024

Page 20 of 41

Alliston TS M1 Project 45195 Feeder Map



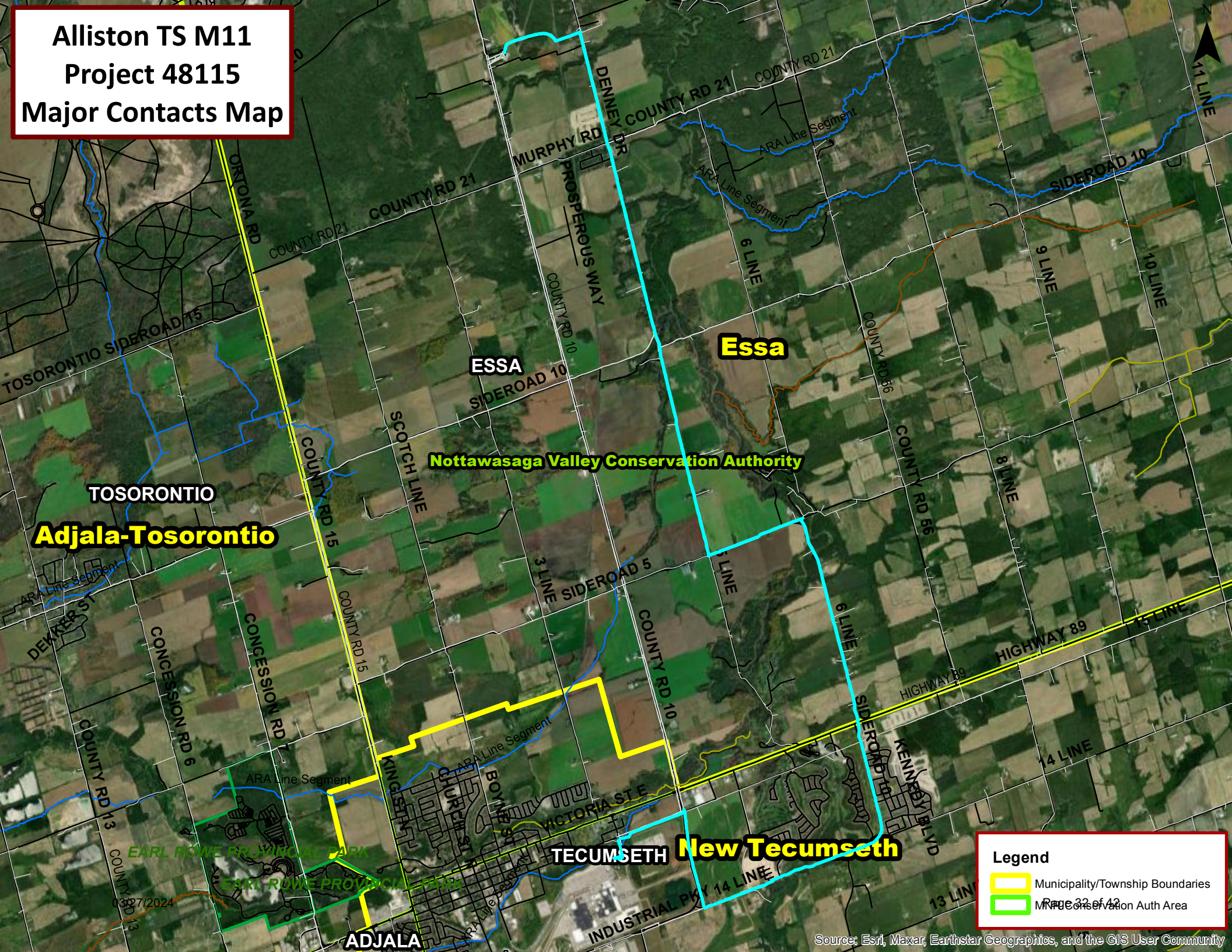
Legend

- Switch
- TL_STATION_JUNCTION
- <all other values>
- TL STATION JUNCTION
- Primary Overhead Conductor

OWNER

- Customer - No H1 Responsibility
- Hydro One Distribution Stations.
- Provincial Park
- National Park
- First Nations Reserves

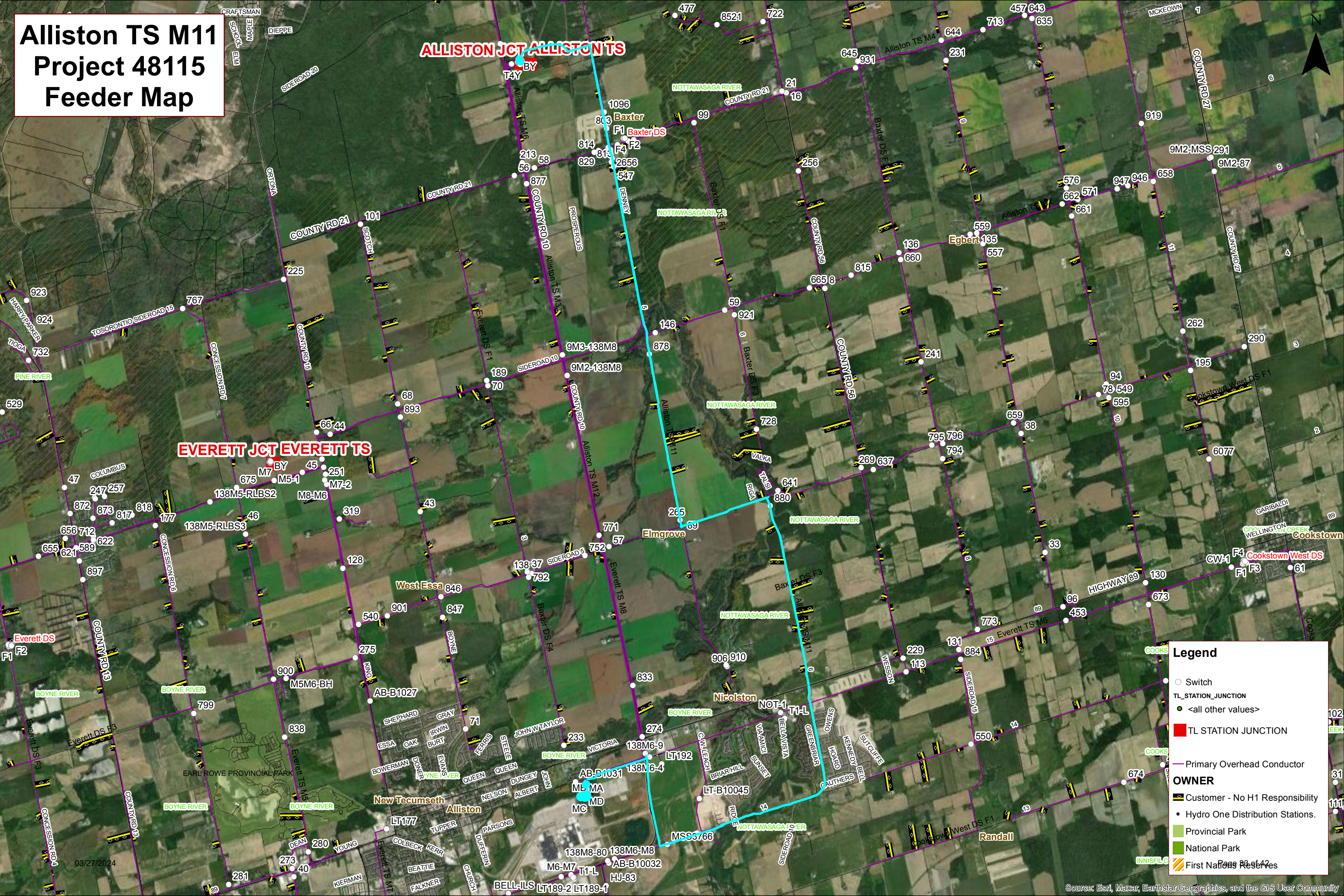
**Alliston TS M11
Project 48115
Major Contacts Map**



Legend

- Municipality/Township Boundaries
- MRA or Conservation Auth Area

Alliston TS M11 Project 48115 Feeder Map



ALLISTON JCT ALLISTON TS

EVERETT JCT EVERETT TS

Legend

- Switch
- TL_STATION_JUNCTION
- <all other values>
- TL STATION JUNCTION
- Primary Overhead Conductor

OWNER

- Customer - No H1 Responsibility
- Hydro One Distribution Stations.
- Provincial Park
- National Park
- First Nations Reserves

03/27/2024