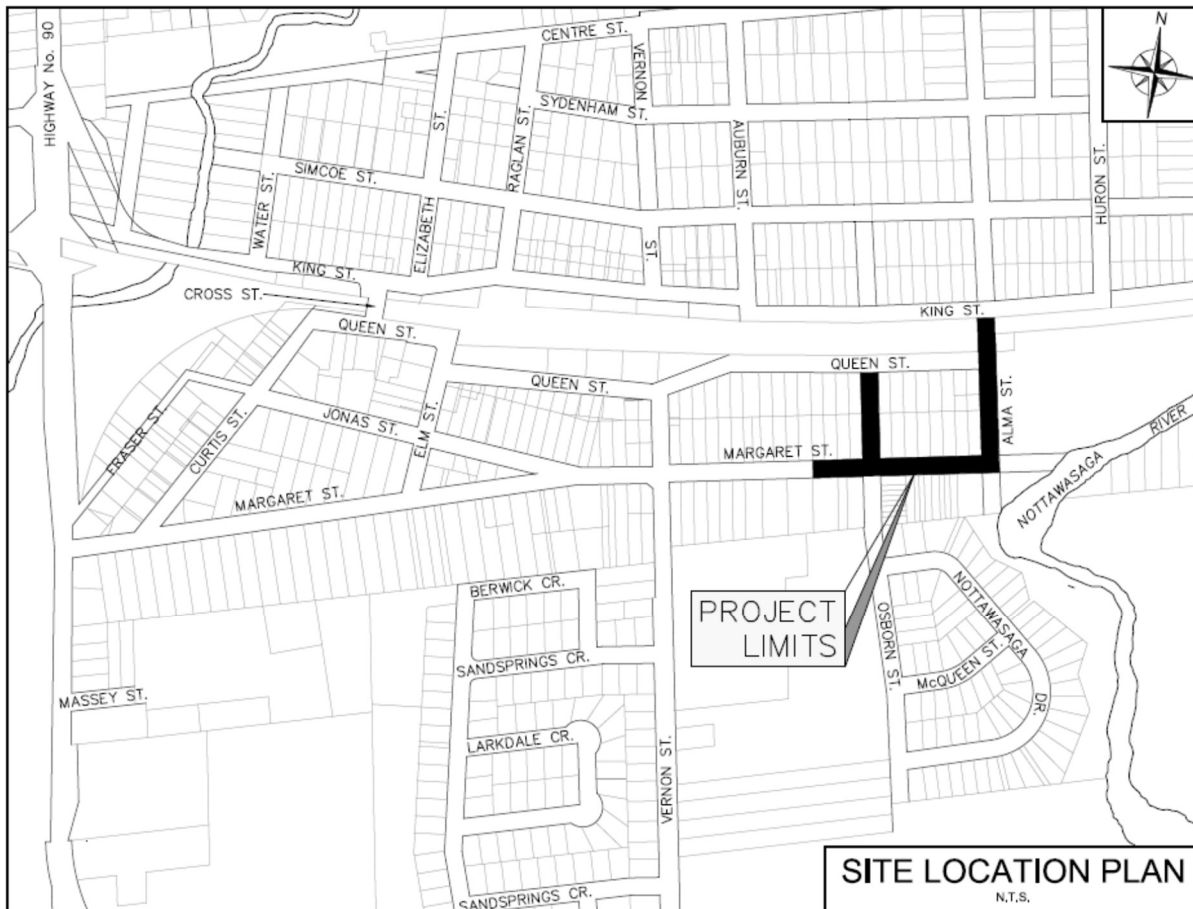


NOTICE OF CONSTRUCTION

MARGARET STREET RECONSTRUCTION PHASE 3

Please be advised that Pennorth Group is planning to return to the site Thursday May 4th to complete the remaining works as part of the Margaret Street Reconstruction Phase 3 Project. The remaining works include raising maintenance holes and catch basins to finished grade, concrete curb fill in behind catch basins, driveway restoration, topsoil and sod, and surface asphalt.



The remaining works are expected to be completed by the first week of June weather depending. The road through the construction zone will be closed same as last year, open to local traffic only. Detour signage will be installed. Although every effort will be made to limit the amount of disturbance to the residents, some inconveniences, such as impeded traffic flows are to be expected. We request that when driving or walking through and around the construction area, that you proceed with caution and obey the construction traffic signage and

personnel.

The Contractor will take care while excavating around underground utilities however the location of individual Bell and Roger services are unknown and unfortunately breaks may be expected. When this happens Bell and Rogers requires the homeowner to call-in the break to initiate the response and repair.

During construction, residents within the construction zone may have their garbage and recycling collected from the end of their driveways and moved by the contractor for collection. All bins will be returned at the end of the day. On collection day (Wednesdays), please have garbage and recycling out to the end of the driveway by **7:00am**.

If you have any special needs, regular in-home care or deliveries, please advise Josh McLean from the Ainley Group at 705-817-1363, or josh.mclean@ainleygroup.com so that we can coordinate and schedule works to limit any disruptions during construction.

We thank you in advance for your cooperation throughout construction. Should you have any questions or concerns related to this project, please do not hesitate to contact either of the following representatives:

AINLEY GROUP

Josh McLean
Contract Administrator
josh.mclean@ainleygroup.com
705-817-1363

TOWNSHIP OF ESSA

Jeremy Walton
GIS/Survey Technician
jwalton@essatownship.on.ca
705-424-9917 ext. 136

Matt Houle
Field Services Coordinator
matt.houle@ainleygroup.com
613-885-0824